

LUTKOVNO GLEDALIŠČE LJUBLJANA

Technical Rider

# Mala čarovnica - The Little Witch



**Lutkovno gledališče Ljubljana/Ljubljana Puppet Theatre**

Krekov trg 2, 1000 Ljubljana, Slovenija

T: +386 (0)1 3000970

Fax: +386 (0)1 3000980

[info@lgl.si](mailto:info@lgl.si)

[www.lgl.si](http://www.lgl.si)

[www.facebook.com/LutkovnoGledalisceLjubljana](https://www.facebook.com/LutkovnoGledalisceLjubljana)

## Contents

Ljubljana Puppet Theater – The Little Witch .....	1
Contents .....	2
General Information .....	3
Staging and Technical Requirements .....	5
Lighting .....	6
Sound .....	6
Dressing Rooms .....	7
Timetable and Contact.....	7
Appendix 1 - Lighting plans.....	8
Appendix 2 - Photography of set up.....	9

## General Information

Director: Brane Vižintin

Translator: Katja Ogrin

Dramaturgy and adaptation: Jera Ivanc

Puppet design: Slavko Hočevar

Scenography: Laura Krajnc by Vladimir Rijavec's design

Puppet technology: Iztok Bobič

Music: Marijan Vodopivec

Musical adaptation and closing song: Joži Šalej

Proofreader: Maja Cerar

Lighting design: Niko Štabuc

Music production: Nino de Gleria

Music performers: Jelena Ždrale, Primož Fleishman, Aleš Rendla, Joži Šalej, Nino de Gleria

Voice on the recording: Primož Pirnat

Performers:

Little Witch: Aja Kobe

Abraxas, Second child (voice): Matevž Müller

Rumpumpel Witch, Girl with flowers, Red Bill, Shepherd girl: Ana Hribar

Head Witch, Hawker (voice), Snowman, Rina (animation), Teapot: Jure Lajovic

Swamp Witch, Seller, First old woman, Lady, Second child (animation), Black Joe: Rok Kunaver

Second old woman, Hawker (animation), Lady's child, First child, Rina:Feat. Boštjan Sever g.a.

Stage Manager and Sound Designer: Emil Koprivc

Producer: Alja Cerar Mihajlovič

Stage Technicians: Darko Nedeljko, Klemen Sašek, Kliment Petkukjeski

Making of replicas of puppets, set and costumes: Iztok Bobič, Sandra Birjukov, Monika Colja, Polona Černe, Zala Kalan, David Klemenčič, Olga Milič, Zlatko Djogič, Laura Krajnc, Žiga Lebar, Jože Lašič, Uroš Mehle, Zoran Srdić

*The Little Witch* is only 127 years old... which is very young for her profession. She lives alone in her witch house in the middle of the woods, with Abraxas the raven as her companion. Every year on Bonfire Night, the older witches gather on Mount Klek and dance the night away. The Little Witch is too young to attend the dance, but decides to secretly join in the fun. Godmother Ropotavza exposes her, and because Little Witch has broken the rule, she has one year to prove that she can be a "good" witch.

*The Little Witch* is a "puppetheque" marionette show based on a story by the German fabulist Otfried Preußler and dramatised by Jože Pengov in 1967, when the work received its Slovenian premiere, subtitled "a fairy-tale play for marionettes in 13 pictures". More than 50 years after Pengov's hit, the production returns to the Ljubljana Puppet Theatre in an adapted and refreshed form, this time under the direction of the master of Slovenian puppetry Brane Vižintin.

This warm and friendly humorous stage production, infused with folkloric elements, intertwined with humorous dialogues, intergenerational discussions and fierce conflicts arising from the everyday lives of children, raises questions about kindness, its importance and meaning. Will the Little Witch be able to behave and do "good" all year round? Does she even know what "good" magic is? She decides that the best revenge is to prove the older witches wrong about her and the meaning of magic... so that she will become a little superhero witch who helps those in need. She comes to the aid of many who cannot help themselves, proving to herself and to other witches that she can be a really good witch.

The puppet premiere of Preußler's text was directed in 1967 by Jože Pengov, a key player in Slovenian puppetry (premiere 17 June 1967). The production confirmed his programmatic orientation towards contemporary fairy-tale poetics and demonstrated his great confidence in the power of the marionette, its stage presence and movement. The marionettes were created by Slovenian sculptor and puppet designer Slavko Hočevar, who was the artistic director of the Ljubljana Puppet Theatre from 1956 to 1970. His marionettes were characterised by ironic humour and technological innovations that contributed greatly to the perception of the Slovenian puppet as a work of art.

Brane Vižintin is a puppet artist, actor and animator at the Ljubljana Puppet Theatre, winner of numerous international and Slovenian awards, including the Župančič Award. He is one of the greatest masters of puppet animation in Slovenia.

Jože Pengov (1916–1968), manager and artistic director of the Ljubljana City Theatre (today the Ljubljana Puppet Theatre), director, dramaturge, actor, writer, translator, publicist and educator, promoter of puppetry art at home and abroad, laid the foundations for contemporary puppet theatre in Slovenia.

The premiere is sponsored by Spar Slovenija d.o.o.

Lutkovno gledališče Ljubljana  
Premiere 17 November 2022  
Small Stage LGL  
Season 2022/2023

## **Touring personnel**

The company tours 6 actors (4 M, 2 F) and 7 technicians (1 sound engineer, 1 light technician, 3 set technicians, 1 driver for actors, 1 wardrobe attendant)

Animators: Aja Kobe, Matevž Müller, Ana Hribar, Jure Lajovic, Rok Kunaver, Boštjan Sever

Stage Manager and Sound Engineer: Emil Koprivc

Set Technicians: Darko Nedeljković, Klemen Sašek, Kliment Petkukjeski

Lights: Niko Štabuc

Wardrobe attendant: Anja Pika Lopatič

## **Performance**

The performance lasts approximately 45 minutes with no interval.

Lights and sound are operated by toured personnel. Both operating positions must have a clear view of the stage.

Sound operating position is required. The position cannot be behind glass or in a control box. Please hold off auditorium seats to facilitate this if necessary.

## **Get-in & get-out**

The get-in takes 8 hours, which includes 5 hours to set up the scenography and 3 hours for setting of the light and sound. The get-out takes 3 hours.

The venue needs to provide a minimum of 2 skilled technicians for get-in and get-out, 1 specialized in sound, and 1 in lighting. Both should be competent at rigging/hanging set parts.

## **Staging and Technical Requirements**

### **Stage and Set-Up**

- A full black out is required
- Optimal size of the stage for the closed version is 8m W x 6m D x 5m H
- Minimal size of the stage for the closed version is 7m W x 6m D x 4,5m H
- There should be raked seating for the audience
- Please note we have to fix the construction into the stage and walls

## **Items provided by venue**

This performance requires no special items provided by the venue.

## **Lighting**

Please see Appendices 1 – Lighting plans for the plan.

Lighting control and reflectors provided by the venue for the performance:

- 3x PC 1000 W
- 2x Profile ETC 575W 25/50
- 2x PC cct 650 W
- 2x Direct 220V

We bring:

- 3x Mini PC 300W
- 6x Floodlight 150 W
- 4x Astera pixelbrick

We require a minimum of 22 regulated channels or a 2x dimmer pack with the option of a three phase 5 full connection (2x 32 A) or (1x 64A) + 512(5pin) dmx connection.

## **Sound**

Sound equipment provided by venue for both versions:

- 2x speaker in the front - FOH
- 2x speaker on the stand in the back - monitoring
- 1x speaker under the stage
- 6x head microphone Sennheiser

Sound equipment we bring with us:

- Macbook pro
- Digital mixing table Soundcraft SiCompact 16 channel

Please note that a front of house operating position is required. Please hold off auditorium seats to facilitate this if necessary.

## **Dressing Rooms**

Please provide:

- Two dressing rooms for the actors (4 male, 2 female). These should be non-smoking and private.
- Showers with hot water
- Tea and Coffee are desirable
- 1 x Crate of 500ml Still Water
- If providing meals please note a number of company members are vegetarian.

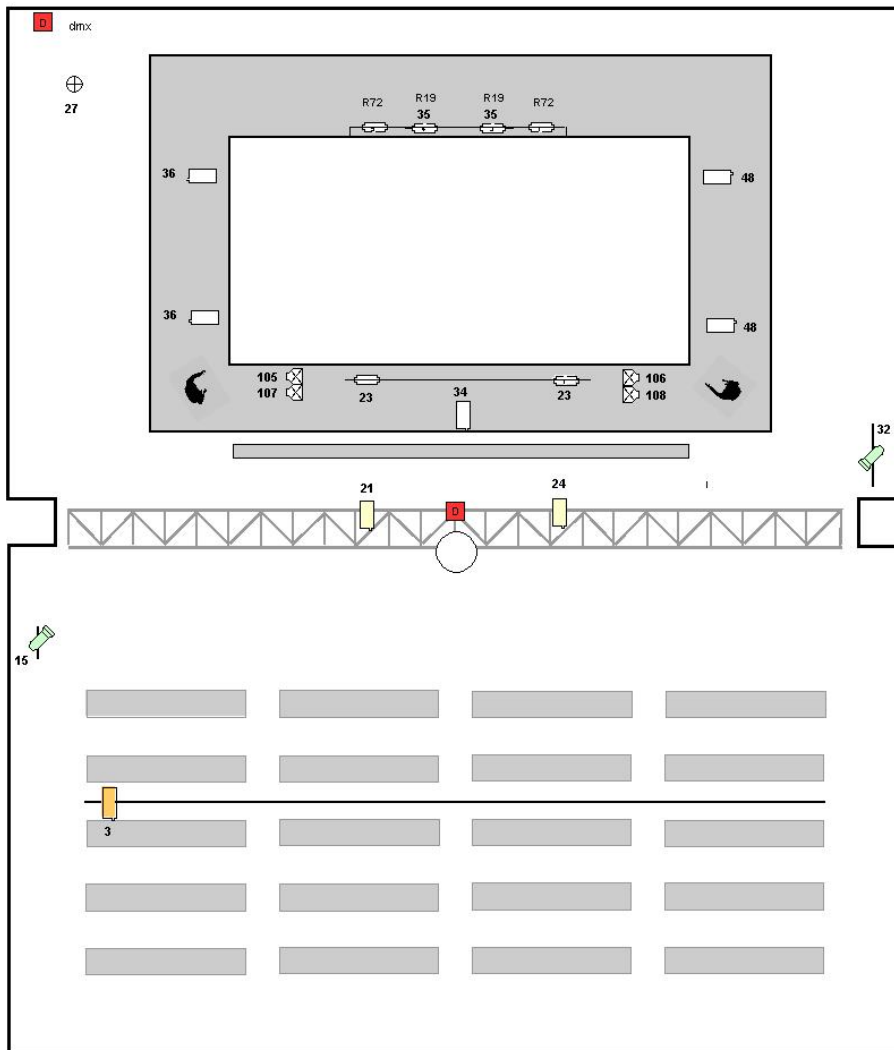
## Timetable, Transport and Contact

Set up takes 8 hours and take down takes 3 hours. Scenography travels with a VW Crafter and an 8+1 van. The cast and crew travels with 8+1 van.

	THE LITTLE WITCH			WORKERS NEEDED					
DATE	SET UP / TAKE DOWN	START	END	SCENE		LIGHTS		SOUND	
Day 1:									
	unloading van	09:00	10:00	1h	2	1h	1	1h	1
	set up scene	10:00	12:00	2h	1				
	set up lights	10:00	13:00			3h	1		
	set up sound	11:00	13:00					2h	1
	break	14:00	15:00						
	focusing lights and final set up	12:00	17:00			3h	1		
Day 2:									
	rehearsal	09:00	10:00						
	performance	11:00	11:45						
	stike down and loading van	12:00	15:00	3h	1	1h	1	1h	1

For any information about technical details please contact:  
 Jure Žnidaršič, Technical manager  
 e-mail: jure.znidarsic@lgl.si  
 tel.: +3861300099

# Appendix 1 - Lighting plan



Key	
	Etc profile 575w
	Adb pc 650w
	Adb pc 1000w
	Mini pc 300w
	Astera pixelbrick
	Ventilator polz
	Disko krogla

 LUTKOVNO GLEDALIŠČE LJUBLJANA	
Venue: Mali Oder	Light Plot
Design: LGL 24.3.2023	



**Appendix 2 – Photography of set up**

