



LUTKOVNO GLEDALIŠČE LJUBLJANA

Technical Rider

# Palčica – Thumbelina



## **Lutkovno gledališče Ljubljana/Ljubljana Puppet Theatre**

Krekov trg 2, 1000 Ljubljana, Slovenija

T: +386 (0)1 3000970

Fax: +386 (0)1 3000980

[info@lgl.si](mailto:info@lgl.si)

[www.lgl.si](http://www.lgl.si)

[www.facebook.com/LutkovnoGledalisceLjubljana](https://www.facebook.com/LutkovnoGledalisceLjubljana)

## Contents

### Ljubljana Puppet Theatre – Thumbelina

General Information .....	3
Staging and Technical Requirements .....	5
Lighting .....	5
Sound .....	5
Dressing Rooms .....	6
Timetable, Transport and Contact.....	6
Appendix 1 – Lighting Plan.....	7
Appendix 2 – Photographs of the Performance .....	8
Appendix 3 – Scenography plan and side view .....	9

## General Information

Based on a fairy tale by:Hans Christian Andersen

Director:Maja Kunšič

Adapted by:Maja Kunšič, Tajda Lipicer

Visual and Set Design:Zala Kalan

Music:Zvezdana Novaković

Costume Design:Tina Kolenik

Lighting Design:Maša Avsec

Language Consultant:Maja Cerar

Puppet Engineers:Žiga Lebar, Zala Kalan

Cast:Maja Kunšič

Stage Managers and Sound Designers:Emil Koprivc, Damir Radončić

Producer:Alja Cerar Mihajlović

Chief Lighting Technicians:Maša Avsec/ Danilo Korelec

Puppets, Set and Costumes:Zala Kalan, David Klemenčič, Žiga Lebar, Sandra Birjukov, Monika Colja, Olga Milić

Technical Assistance:Mitja Vasjč

We would like to thank:Irena Študohtar for her permission to use quotes from her book "Fižoložofija: čudeži vrtnarjenja" (Mladinska knjiga, Ljubljana 2022).

Everything starts with a seed. And a desire for something to grow. Given some care and attention, the seed soon sprouts up from the ground, and grows a flower to blossom. From the flower, a tiny creature comes into the world full of brash curiosity. A creature no bigger than a thumb.

Her petite appearance, however, makes the world no less tough on Thumbelina. Soon enough, the girl experiences a series of episodes pushing her to re-examine her relationship with the world. After the Old Toad kidnaps her to become her son's wife, Thumbelina runs away and ends up with Lady Cockchafers, only to be ridiculed for her looks. When winter comes, she takes refuge with the Field Mouse, helping her with household chores in exchange for board and lodging. It is warm and cosy in the mouse's nest, and Thumbelina has everything she needs. Or does she?

This is an epic tale as much as it is a distinctly psychological one in terms of its exemplary, almost didactic nature. Andersen introduces various lifestyles and value systems to indicate that "good" and "bad" or "pretty" and "ugly" are often merely subjective labels that may prove to be relative in relation to others. Andersen suggests that unreflecting external pressure from society may weigh heavily on an adolescent; that choosing to be loyal to yourself is an act that requires a great deal of determination, integrity, and courage.

Thumbelina has entered the canon of European children's and youth literature as one of the subtlest, most delicate and brightest fairy tales from Hans Christian Andersen's body of work. The writer modelled the heroine the size of a thumb on other stories of miniature creatures (such as the Lilliputians from Jonathan Swift's Gulliver's Travels). Since then, the

character of Thumbelina has embarked on a journey of her own, seeing a number of adaptations for film, TV, literature, art, and this time for the stage, adapted for the Ljubljana Puppet Theatre by writer and actor Maja Kunšič and dramaturge Tajda Lipicer.

Premiere: 16 March 2023, LGL Kulturnica

### **Touring personnel**

The company tours 1 actor (1 F) and 3 technicians (1 stage manager and sound engineer, 1 light technician, 1 set technician).

Actors: Maja Kunšič

Stage Manager and Sound Engineer: Emil Koprivc/Damir Radončić

Light technician: Maša Avsec/Danilo Korelec

Set Technician: Iztok Vrhovnik

### **Performance**

The performance lasts approximately 40 minutes with no interval and is intended for a maximum audience of 60 spectators.

Lights and sound are operated by toured personnel. Both operating positions must have a clear view of the stage. Sound operating position is required. The position cannot be behind glass or in a control box. Please hold off auditorium seats to facilitate this if necessary.

### **Get-in & get-out**

The get-in takes 6 hours altogether, 4 hours for the lights, 2 hours for scenography, 2 hours for the sound. The get-out takes 2 hours altogether, 2 hours for the lights, 1 hours for scenography, 1 hours for the sound.

There must be time for a rehearsal and a sound and light check before the performance.

The venue will need to provide a minimum of 1 skilled technician for get-in and get-out, 1 specialized in sound, and 1 in lighting. Both should be competent at rigging/hanging set parts.

# Staging and Technical Requirements

## Stage and Set-Up

- Stage dimensions: 4 m W x 5 m D x 3,5 m H
- Flat stage with raked seating required.
- The stage must be raised to ensure a good view of the beginning of the stage. See appendix 3.
- A black box stage with a matt-finish floor is required (please lay a dance floor if necessary).
- A full black out is required.

## Lighting

Please see Appendix 1 for the plans.

Lighting control and reflectors provided by venue:

- 4x Mini PC Spotlight 300W
- 10x PC ADB 650W

Lighting control and reflectors we bring with us:

- 1x torch
- 1x New Years lights
- 3x PAR 16
- 5 x Par 36 Pinpoint
- 1x Chamsys Mini Wing + computer

The company brings it's own gels.

## Sound

Sound equipment provided by the venue:

- 2x FOH
- XLR cables
- Jack cables
- 220V schuko plug
- 1x Mixing table (4-channel or more)
- 2x Microphone (in the range of Shure beta58)
- 2x Tripod

Sound equipment we bring with us:

- 1x Computer
- Looper
- kalimba

## Dressing Rooms

Please provide:

- One dressing room for the actor (1 female). It should be non-smoking and private.
- Showers with hot water.
- Tea and Coffee are desirable.
- 1 x Crate of 500ml Still Water.
- If providing meals please note a number of company members are vegetarian.

## Timetable, Transport and Contact

Set up takes 6 hours. There must be a rehearsal before the performance. The take down takes 2 hours.

	THUMBELINA			WORKERS NEEDED					
DATE	SET UP / TAKE DOWN	START	END	SCENE		LIGHTS		SOUND	
Day 1:									
	unloading van	08:00	09:00	1h	2	1h	1	1h	1
	set up scene	09:00	11:00	2h	1				
	set up lights	09:00	11:00			2h	1		
	set up sound	09:00	11:00					2h	1
	focusing lights and final set up	11:00	14:00			3h	1		
	break	14:00	15:00						
	rehearsal	15:00	16:00						
	performance	17:00	17:40						
	stike down and loading van	18:00	20:00	2h	1	1h	1	1h	1

The scenography travels with VW Crafter van, actor and technicians travel with another VW Transporter van.

Please notify the company at the earliest opportunity if any of the requirements in this document cannot be met.

For any information about technical details please contact:

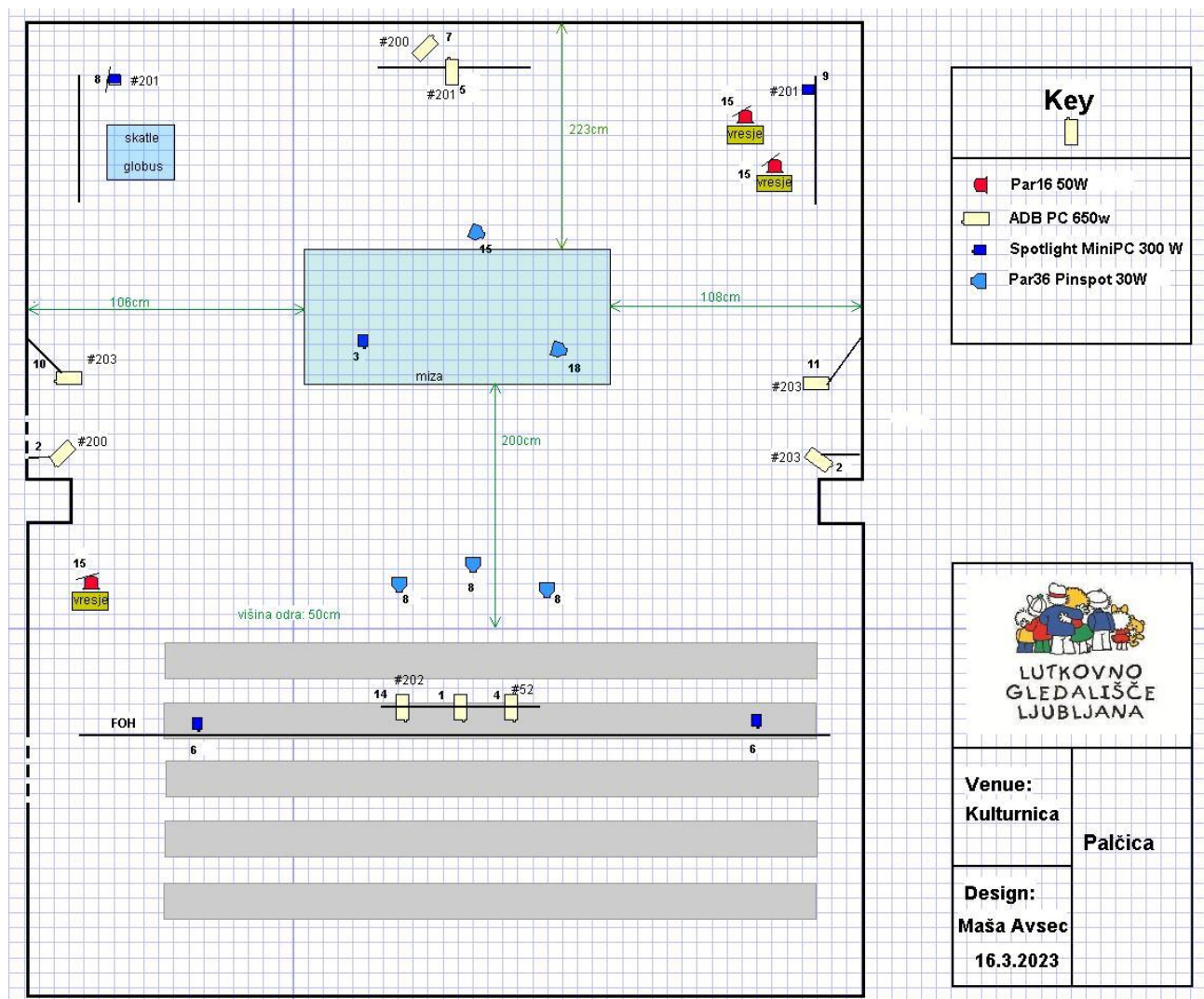
Jure Žnidaršič

Technical manager

e-mail: jure.znidarsic@lgl.si

tel.: +38613000991

## Appendix 1 – Lighting Plan



**Appendix 2 – Photographs of the Performance**





# Appendix 3 – Scenography plan and side view

